



Electrolux

Modular Cooking Range Line 700XP 2-Hot Plates Electric Boiling Top Range

ITEM # _____

MODEL # _____

NAME # _____

SIS # _____

AIA # _____



Electrolux



Modular Cooking Range Line

700XP 2-Hot Plates Electric Boiling Top Range

371014 (E7ECED2R00)	700XP 2 HOT PLATE ELECTRIC BOILING TOP 2.6kW - 400V
371126 (E7ECED2R0N)	700XP 2 HOT PLATE ELECTRIC BOILING TOP 2.6kW - 230V

Short Form Specification

Item No. _____

To be installed on open base installations, bridging supports or cantilever systems. Two 2.6 kW cast-iron hot plates hermetically sealed to the one-piece top. Exterior panels in stainless steel with Scotch Brite finish. One piece pressed work top in 1.5 m

Main Features

- Unit to be mounted on open base cupboards, bridging supports or cantilever systems.
- The two 2.6kW cast-iron plates are hermetically sealed to the one-piece top.
- The special design of the control knob system guarantees against water infiltration.
- IPX 4 water protection.

Construction

- One piece pressed 1.5 mm work top in Stainless steel.
- Model has right-angled side edges to allow flush fitting joints between units, eliminating gaps and possible dirt traps.
- External panel in Stainless Steel with Scotch Brite finish.

Optional Accessories

- 4 wheels, 2 swivelling with brake (700/900XP). It is mandatory to install with base supports for feet/wheels. ☐ PNC 206135
- Support for bridge type system, 800mm ☐ PNC 206137
- Support for bridge type system, 1000mm ☐ PNC 206138
- Support for bridge type system, 1200mm ☐ PNC 206139
- Support for bridge type system, 1400mm ☐ PNC 206140
- Support for bridge type system, 1600mm ☐ PNC 206141
- Support for bridge type system, 400mm ☐ PNC 206154
- Water coulmn with swivel arm (water column extension not included) ☐ PNC 206289
- Water column extension for 700 line ☐ PNC 206291
- Chimney upstand, 400mm ☐ PNC 206303
- Right and left side handrails ☐ PNC 206307
- Base support for feet or wheels - 400mm (700/900XP) ☐ PNC 206366
- Base support for feet or wheels - 800mm (700/900) ☐ PNC 206367
- Rear paneling - 600mm (700/900XP) ☐ PNC 206373
- Rear paneling - 800mm (700/900) ☐ PNC 206374
- Rear paneling - 1000mm (700/900) ☐ PNC 206375

APPROVAL: _____



Electrolux

Modular Cooking Range Line 700XP 2-Hot Plates Electric Boiling Top Range

- Rear paneling - 1200mm (700/900) PNC 206376 ☐
- Chimney grid net, 400mm PNC 206400 ☐
- Frontal handrail 400mm PNC 216046 ☐
- Frontal handrail 800mm PNC 216047 ☐
- Frontal handrail 1200mm PNC 216049 ☐
- Frontal handrail 1600mm PNC 216050 ☐
- Large handrail - portioning shelf, 400mm PNC 216185 ☐
- Large handrail - portioning shelf, 800mm PNC 216186 ☐
- 2 side covering panels for top appliances PNC 216277 ☐



**Modular Cooking Range Line
700XP 2-Hot Plates Electric Boiling Top Range**

The company reserves the right to make modifications to the products without prior notice. All information correct at time of printing.

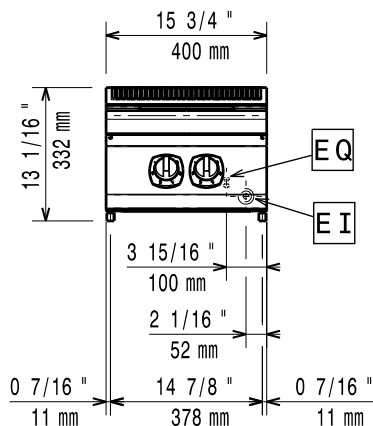
2014.06.23



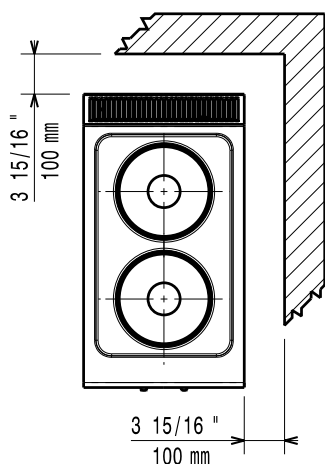
Electrolux

Modular Cooking Range Line 700XP 2-Hot Plates Electric Boiling Top Range

Front

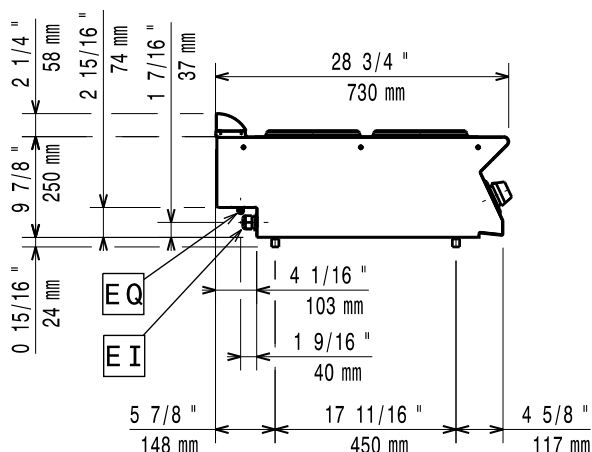


Top



EI = Electrical connection

Side



Electric

Supply voltage:

371014 (E7ECED2R00)

400 V/3 ph/50/60 Hz

371126 (E7ECED2R0N)

230 V/3 ph/50/60 Hz

Total Watts:

5.2 kW

Key Information

Front Plates Power:

2.6 - 0 kW

Back Plates Power:

2.6 - kW

Front Plates dimensions:

Ø 230

Back Plates dimensions:

Ø 230

Net weight:

20 kg

Shipping weight:

371014 (E7ECED2R00)

25 kg

371126 (E7ECED2R0N)

27 kg

Shipping height:

540 mm

Shipping width:

460 mm

Shipping depth:

820 mm

Shipping volume:

371014 (E7ECED2R00)

0.2 m³

371126 (E7ECED2R0N)

0.22 m³

If appliance is set up or next to or against temperature sensitive furniture or similar, a safety gap of approximately 150 mm should be maintained or some form of heat insulation fitted.



**Modular Cooking Range Line
700XP 2-Hot Plates Electric Boiling Top Range**

The company reserves the right to make modifications to the products without prior notice. All information correct at time of printing.

2014.06.23